

THE XII CENTURY TOWERS, A BENCHMARK OF THE ROME COUNTRYSIDE ALMOST CANCELLED: THE SAFEGUARD PLAN BY LOW COST UAV AND TERRESTRIAL DSM PHOTOGRAMMETRY SURVEYING AND 3D WEB GIS APPLICATIONS

L. Barelli¹, P. Paolini^{1,*}, G. Forti²

¹ Dept. of History, Representation, and Restoration of Architecture (D.S.D.R.A), “SAPIENZA” University, Rome, Italy -
(Lia.Barelli, Priscilla.Paolini)@uniroma1.it

² ESRI Italia, Rome, Italy - gforti@esriitalia.it

Commission II

KEY WORDS: XII century towers, Rome Mid-Age countryside, Cultural Heritage preservation, close-range photogrammetry, UAV photogrammetry, integrated survey, low-cost action camera, GPS, Web GIS 2D and 3D.

ABSTRACT:

“Giving a bird-fly look at the Rome countryside, throughout the Middle Age central period, it would show as if the multiple city towers has been widely spread around the territory” on a radial range of maximum thirty kilometers far from the Capitol Hill center (Carocci and Vendittelli, 2004).

This is the consequence of the phenomenon identified with the “Incasalamento” neologism, described in depth in the following paper, intended as the general process of expansion of the urban society interests outside the downtown limits, started from the half of the XII and developed through all the XIII century, slowing down and ending in the following years. From the XIX century till today the architectural finds of this reality have raised the interest of many national and international scientists, which aimed to study and catalog them all to create a complete framework that, cause of its extension, didn't allow yet attempting any element by element detailed analysis. From the described situation has started our plan of intervention, we will apply integrated survey methods and technologies of terrestrial and UAV near stereo-photogrammetry, by the use of low cost drones, more than action cameras and reflex on extensible rods, integrated and referenced with GPS and topographic survey. In the final project we intend to produce some 3D scaled and textured surface models of any artifact (almost two hundreds were firstly observed still standing), to singularly study the dimensions and structure, to analyze the building materials and details and to formulate an hypothesis about any function, based even on the position along the territory. These models, successively georeferenced, will be imported into a 2D and 3D WebGIS and organized in layers made visible on basemaps of reference, as much as on historical maps.

1. INTRODUCTION

1.1 The State of the Art

The Middle Age towers (as isolated structures or as part of farmhouses), stand on the Rome countryside landscape as a representative witness of an epoch, being until today the survived architectural expression and core of the general process of expansion of the urban society interests, outside the downtown limits. Since the half of the XII century the blowing up of the Rome society and its dynamic economy, brought the urban lay and ecclesiastical élite to the realization of many financial investments along the countryside area, as a consequence of the local disappearing of any prior and stable residency. Therefore it resulted into the merging into a single property of wide extensions of land, seen since then as productive entities, exclusively dedicated to cereal crops and cattle breeding. There occurred the functional creation of farmhouses (cited as tower with land properties-*turris cum tenimenta* first and farmhouses-*casali* later) and *castra*, two types changing one into the other as much as a more defensive role was required, gradually moving far from Rome city limits, therefore representing the solution to control those huge

economical investments, destined to persist for a very long time. Scholars from our Department of History, Representation and Restoration of Architecture of SAPIENZA University in Rome (DSDRA), through the integration of competences in History, Restoration, Survey and Modelling of Architecture, since time investigate on such phenomenon, starting from archival, historical and bibliographic research, till the direct analysis of the techniques and building materials, as of the related state of degradation, so as through the study of the architectural shape and structure. Since the early eighties of the twentieth century till today, even the Capitol Superintendence of Rome by publishing the:” Historical, Archaeological, Monumental Map of the roman Suburbs and Countryside”, linked to the new General Town Plan (P. R. G.), showed its interest in the safeguard of the more at risk minor Cultural Heritage assets, such intending towers, farmhouses and historical properties.

A land Census organized in typological categories of 8000 goods and a second one inclusive of archival, bibliographic and cartographic references are part of the newly created GIS, merged to the Informative system of Museums, Art and Territory called SIMART. Specialists from the Cartography laboratory of the Rome Superintendence provided to insert them

* Corresponding author

into a WebGIS, where all the goods descriptive cards were linked together, either 2D vector format data or maps, but all accessible actually via intranet only (Marcelli et al., 2014).

Despite these activities and first efforts, no protective or satisfactory action was ever performed by any of the competent bodies yet, recently resulting in the partial or total loss of some artifacts, getting into progressive worst conditions and collapse.

2. THE HISTORICAL FRAME

2.1 The Incasalamento Dynamics and Characters



Figure 1. E. Gioia (1862-1937) *campagna romana*

The Roman Campagna (countryside)¹ was characterized in the Middle Ages by a large number of settlements, widespread and extensive (up to hundreds of hectares), linked or to the control and jurisdiction of the territory, the *castra*, or to its agricultural management, the *casali* (farm hamlets). This latter term meant a farm, mainly for cereal production, where subsisted a small resident population with the addition of seasonal workers. It is not easy, based solely on buildings, to distinguish between *casali* and *castra*, since both were characterized by fortified elements and sometimes by non-dissimilar extensions. In fact, to understand the nature of the settlement, the elements to be considered were not the edified parts, but the legal status of the residents, which in the *castra* was based on feudal ties, and the cultivated land might even not to be owned by the lord, whereas in *casali* workers were the employees of the proprietor. For these reasons, the lord of a *castrum* benefited from tax levied on the population, while in *casali* gain was derived from production. Regarding the geographical distribution, historians have (in an artificial manner) identified three zones within the roman Countryside having the Urbe (Carocci and Vendittelli, 2004) as their centre: the first, beyond the vineyard area around the Aurelian walls, was six-to-seven kilometres wide arable land, occupied by farmhouses and other smallholdings; the second, of four-to-six kilometres, was characterized by the co-presence of *castra* and *casali* and finally the third, where the *castra* clearly predominated. In the last two zones there were also a few villas and *burgi*, a type of settlement that was dying out. Most of these settlements originated in the 12th and 13th centuries thanks to favourable political and economic circumstances that allowed noble and wealthy Roman families and ecclesiastical institutions to occupy and "manage" the outlying territories of the city. Often linked to pre-existing Roman-era settlements, *castra* and *casali* were re-used, either

directly, by building them over the ancient remains for elevation and solidity, or by recovering construction materials, or by exploiting accessory parts such as cisterns. In the outbuildings there are in fact wells, cisterns, watering holes, canals and fishing ponds, more or less deriving from the reuse of ancient structures. These latter structures in particular show the great importance of water for such settlements. The need for water reserves for agricultural activities and everyday life, in fact, determined the site where many of them were located, more densely in the south-east area of the suburb, full of watercourses, including the Marrana creek, actually the union of more ancient waters. An important element in choosing the location for a settlement was also the presence of spring water, often acidic, as some of the documented place names indicate (Acqua Bullicante - Bubbling Water, Acqua Sotterra - Underground Water, Acqua Puzza - Smelly Water, etc.), its presence allowing for industrial activities such as milling, wool fulling, etc. A fairly indicative picture of the spread of medieval settlements in the roman Campagna is provided in the map by Eufrosino della Volpaia (Map of the Roman Campagna in Paul III's time, 1547), though it reflects a later situation (Figure 2).



Figure 2. Eufrosino della Volpaia, 1547, detail of sheets 2 e 3

In fact, it is important not to confuse the original use and management of these settlements with practices and situations of different geographies and later centuries.

This particular organization of the territory, which has no contemporary equal, has attracted the attention of many scholars even in recent times, as much research has been devoted to finding and interpreting any written sources as to investigating the surviving physical structures². Nonetheless, many aspects have still to be clarified or explored. A highly characteristic architectural element in almost all such settlements is the tower - *turris* - usually very tall and generally alone (paired towers are rare). It is worth remembering that before the appearance of the term *casale* in notarial deeds, such settlements were called *turris*, a term that meant not a single structure but the group of buildings to which it belonged. At least until the last century urbanization, the landscape around the Urbe was clearly marked - in addition to Roman ruins distinguished by aqueducts - by abandoned and ruined towers, visible from a considerable distance. These towers could be isolated structures, usually surrounded by a brick enclosure (*redimen*), or part of groups of buildings of a certain complexity, like a real *castrum* or *casale*.

² Noted studies include, in addition to references in the many works by Giuseppe Tomassetti on the Roman Campagna, by Jean Coste and his students, the reports of surveys conducted by the British School at Rome, the writings of Giovanni Maria De Rossi, and the most recent investigations by Sandro Carocci, Marco Vendittelli and Daniela Esposito.

¹ This definition signifies "the area between the vineyards of the suburbs and the first castles and villages that survive from abandonment in the late Middle Ages" (Carocci and Vendittelli 2004: 8).

done by adding aerial shooting, performed by UAV systems, and then georeferenced, to survey all the building when visible by far, or only to include in each 3D surface model the top parts or roofs of any tower, a detail usually missing in any architectural and archaeological survey cause of the impossibility of getting Nadir views from ground stations. Aiming to collect a complete database including all the middle age finds of the Rome countryside, we cannot forget that any tower or farmhouse or castrum has lived its own life and has such a shape, position, materials, details and degradation to have a character to be considered by itself and so surveyed with a subjective integration of techniques. Answering to this premise, these two low cost survey procedures were differently applied and integrated, each one working as a useful example for fastening the future complete work. The georeferencing of each model was realized indirectly to grant high accuracy, as stated (Shahbazi et al., 2015; Lachat et al., 2017), by the application of total stations and GPS systems and allowed the final models to be exported as, either .KMZ format to be imported on Google Earth, or .LAS format to be loaded into the 2D and 3D GIS and into the WebGIS applications.

3.2 Technologies and Method

The potential of small drones for heritage management (Stek, 2016) has been underlined by the application of different types of UAV systems on towers, aiming to experiment the results of either automatic or manual flight mode and see the differences in resolution and 3D model details, so to defining more optimal methods (Mouget and Lucet, 2014). The first applied was an Aeromax X4, a Rotary-wing quadcopter composed by a whole carbon class 3 structure, beech blades, a Pixhawk 16 bit flight controller hardware, a 2 axis servo gimbal, it performs a maximum time of flight of 25 minutes at 3.90 kg of full payload, mounting a mirrorless Camera Sony Alpha 5100, weight 283 gr, with APS-C CMOS sensor, 24,7 Mpxels, 24,3 effective, (6058x4012 - 23,3x15,6mm - 1 pxl=0.0039mm - 100 - 25600 ISO, E PZ 16-50mm Lens (crop factor 1.53 - 24.5 - 77mm lens eq.), FOV @16mm H 72,59°, V 51,98°, D 82,79°, FOV @50mm H 26,45°, V 17,73°, D 31,15°, Aperture f/3,5 - 5,6 (weight 125 gr), minimum focus distance 0,25 m, Optical Steady Shot, file format jpeg large and Raw(.ARW -Alpha RaW) (Figure 5).



Figure 5. UAVs survey and PhotoScan final alignment

The drone flight is controlled by a ground datalink Real Time Kinematic that triangulates the in-flight position improving GPS data accuracy. The Ground Controller (2.4 GHz) uses a full feature, free, open-source Mission Planner application, that allows to control and tune the drone components performance and to plan and save in advance any shooting mission to reload and apply it autonomously on field. While it monitors the

vehicle's status, it records telemetry logs, to view and analyze them all.

The alternative was to use a Phantom 4 Pro (Ph4Pro), rotary wing quadcopter, weight 1388 gr at full payload, max flight time 30 minutes circa, Satellite Positioning Systems GPS/GLONASS, Gimbal 3 axis (roll, pitch, yaw) brushless, camera Sensor 1" CMOS (crop factor 2,7x), effective 20 Mpxels, stabilized, ISO 100 - 3200 (Auto) 100 - 12800 (Manual), 8,8mm Lens (24 mm, 35 mm equivalent), FOV 84°diagonal, Aperture f/2,8 - f/11 auto focus at 1 m - ∞, file format Jpeg large and Raw DNG. As a third instance we applied a DJI Phantom 4 (Ph4) rotary wing quadcopter, same weight and general characters as the second except for the camera Sensor 1/2.3" CMOS, effective 12,4 Mpxels, 3,5mm Lens (20mm, 35mm format equivalent), FOV 94°diagonal, Aperture f/2.8 focus at ∞, file format Jpeg large and Raw DNG. Both use a Ground Remote controller at 2,4GHz, and the IOS systems app GS Pro (Ground Station Pro) able to control or plan automatic (GPS connected) or manual (Attitude) flights, to set flight path with camera set parameters and chose a specified flight zone even marking the zone boundaries.

About the terrestrial photogrammetry we used an action camera Xiaomi YI 4k, Sony image sensor IMX377, 1/2.3", 12 megapixels (4000x3000) CMOS with Exmor R ability, 1pxl=0.0055mm, 2.66±5%mm Lens (14mm, equivalent 35mm), Aperture f/2.8, FOV D.155°, built-in 3 axis gyroscope and 3 axis accelerometer. It applies a cross-border compensation algorithm, has an auto Low Light system, allows to apply the Lens Distortion Correction, ISO 100-800, EV (Exposure Value compensation) -2.0, +2.0, metering mode Spot and Center, Raw photo format. The action camera was mounted on a 13.5 meters extensible carbon rod (Neutech-ON AIR C135, 7 sections, 3,10 kg) and stabilized by a specific tripod; any shooting set was performed by the YI Action App on mobile, wifi connected.

As an alternative the Canon 5D Mark III produced qualitative results, CMOS sensor 22.3Mp (5760x3840) full frame (36x24mm), EF 24mm f/1.4L II USM lens, FOV D.84°, H.73,74°, V.53,13°, , weight 650gr, Jpeg large and Raw format. The shooting was realized mounting the camera on aluminum 5 meters telescopic rod, triggered by wifi connection using the Camera Remote App on mobile. All the survey models have been scaled and georeferenced by the import of geographic coordinates. The GPS antenna, Geomax, Zenith 35 Pro, helped specifically, thanks to its digital inclinometer that works on rod over the pole at 15°, in single mode and at 30°, in dual mode (GNSS Rover, GSM 3,75 G, 555 channels, multicostellation, multiple frequency, Bluetooth and wifi), allowed to measuring the towers perimeter directly where it stands on ground. Local coordinates were provided by a Total station Geomax, Zoom 90 Robotic, remote control, accXess 10, surveying 1000 meters far objects with no prism, precision 5", Laser Class 3R, 658nm, prism-search automatic 360°, 90 km/h @ 100m, built-in Bluetooth for data transfer SR, Bt handle for LR and 360°prism mounted on a 5 meter telescopic rod on bipod. The close range digital stereo-photogrammetry method creates a 3D surface model of the artifact, measurable and textured, in scale and referenced by local and/or geographic coordinates. By the identification and projection of multiple homologous points represented in more than two pictures adequately overlapped through the intersection of their homologous rays, it gets enough info to univocally reconstruct the whole point cloud object inside the Euclidean space and then to convert it into a mesh surface, even textured.

About the aerial Photogrammetric survey, the planning of UAVs flight aimed at calculating some parameters for reaching the established result of the survey project. The Exposure time (seconds), the Frames per Second frequency (FPS-n°/sec) and the Flight Speed (meters/sec) had to be calculated to grant the overlapping between shots to be at least of 60-80% in longitude (overlap) and 20-50% in latitude (sidelap). In parallel it was calculated the final survey model scale factor, computing each picture to be on the requested resolution, so defining the GSD (Ground Sample Distance) indicating the object real quantity (metric unit) included in each pixel, a datum depending on the flight height/distance from ground, that should be maintained constant and on the camera components configuration.

So it worked the following proportion (1):

$$d:D(\text{GSD}) = f:H \quad (1)$$

where: **d**= pixel dimensions
D=object dimensions
f=focal distance
H=shooting height

For the Terrestrial near photogrammetry survey the same rules were applied, just substituting the flight height with the horizontal shooting distance from the object.

3.3 The Integrated Applications Test

The aim of this report is to evaluate the pros and cons resulting from the integration of different photogrammetry survey methods applied on some towers, selected for representing the sampling execution of low cost and short time consuming approaches, maintaining the requested architectural scale results.

3.3.1 Torre Jacova: Its stated that many medieval settlements were positioned nearby the consular routes that starting from Rome were passing through the countryside, so it is for this tower, laying at south of the 11th km of the Casilina, an ancient roman route directed toward Capua (Campania region). Maybe the tower is a little too far from downtown to be part of a casale and not of a more defensive castrum, however we see the presence of part of its redimen, underlining the role that this surrounding wall any how had of “first defence” (Esposito, 2005) from bandit’s attacks and lootings of crops. The tower rises on top of a hill, ringed by vineyards without any visibility occlusion; this was the occasion to experiment applying the UAVs photogrammetry for the outside perimeter and the terrestrial for the inside, where no horizontal structure obstruction could prevent us from the intent of matching the internal with the external walls survey model. The local georeferencing of these two models was set by a motorized total station; previously 10 topographic nails have been materialized as base stations on ground, 4 at 18m centrally respect to each façade and 4 diagonally, plus one near the entrance outside and one inside the tower. Then it followed the positioning of 17 (20x20cm) targets outside the survey area, fixed in vertical on some concrete poles delimiting the property, to be visible by any station in a number of at least 4. Other 24 targets (10x10cm) were mounted on the outside walls and 16 inside, of which 4 were visually aligned with the outside station. For the geographical referencing of the model a GPS survey was performed, measuring on a levelled 2m high extensible rod, 9 ground stations and 4 points corresponding to the building angles, so respecting the optimal distribution of GCPs around the focus area to be with a spacing of 1/5, 1/10 the UAV flight

height (Harwin and Lucieer, 2012), even to help the accurate centering of the building inside the UAV flight survey project. The DGPS station in RTK mode used 18 satellites (10 GPS and 9 Glonass) to measuring the ground points with the prefixed 5 cm vertical and horizontal accuracy, a crucial datum for correctly georeferencing the model, it results also as a logic deduction if we compare the accuracy of the GPS mounted on drones (in meters) and that performed by ground DGPS antennas where the precision is centimetric in position as in elevation. The flight was executed by a quadcopter (Aeromax X4) shooting with a SONY alpha 5100, sensor APS-C CMOS 24.3Mp, mounting a 16-50mm lens (specs in previous text). Once inserted the GPS coordinates in Mission Planner SW, 5 flights were planned to obtain 70% overlap and executed with camera in landscape, speed of 2m/s. The first flight was at 30m height applied on a rectangular area, camera oriented at Nadir, focal length 50mm (77mm eq.), FOV H 26,45°, V 17,73°, D 31,5°, aperture priority f/5.6, ISO 200, keeping the exposure as automatic. Shooting time lasted 6,21 minutes, 61meters of flight in length, 130 shots, each one representing 9,10x13,75m in real, linear distance between shots 3m, so reaching a GSD 0,23cm, the single picture scale was 1/416,6 and the final drawing scale 1/10. The other 4 flights were in circle around a specified POI (Point of Interest), one at +15m altitude, camera pointing at 0 (ground level) of the tower center and the second at +35m altitude, camera pointed at +20m; the third and fourth respectively at +15 and + 20 altitude, pointing orthogonally towards the walls. The Focal length was 30 mm (45,9mm equiv.) FOV H 42,78°, V 29,15°, D 50,36°, Aperture priority set at f/5, ISO 200. Each circular flight got 26 pictures with linear axel spacing 7-7,5m, so obtaining a GSD 0,39cm, 1 picture representing in real 23,5x15,58m, single picture scale 1/653,6, final drawing scale 1/20. For the inside walls survey we applied the action camera Xiaomi YI 4K, sensor 1/2.3", 12 megapixels (4000x3000) CMOS, 2.66±5%mm Lens (14mm, equiv.), on a 14m high carbon rod and tripod, collecting 300 pictures, linear axel spacing 70cm circa, GSD 0,154cm, in real each frame involves 6.16x4.62m, single picture scale 1/250, final drawing normed scale 1:5 (effect. 1:3). Internal and external surveys were elaborated in two separate chunks (Figure 6), producing dense point clouds of respectively 667,616 and 311,699 points, locally oriented by shared topographic survey points. The final whole model textured mesh has 1,866.153 faces, 938,758 vertices (medium quality elaboration). After the georeferencing with GPS survey coordinates it has been saved in .kmz and .las formats (to import in Google Earth and into a GIS) and in .pdf (producing a pdf 3D were the navigable 3D textured scaled model can be measured and additional notes and observations can be added and shared).

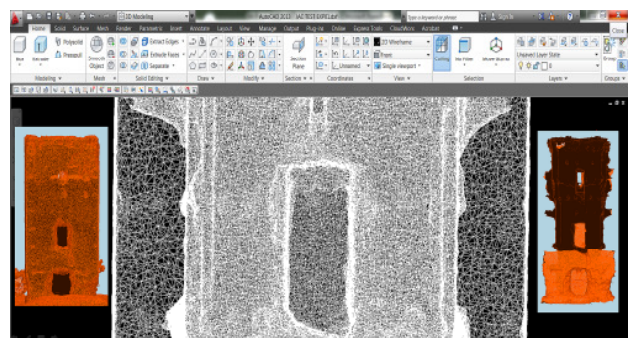


Figure 6. UAV outside and action-cam inside integrated mesh

3.3.2 Torre Maggiore: It stands still in its original proportions at west of the 21st km of the Ardeatina route, 34 meters high and 7x7m wide, surrounded by a redimen (“*Turris Maior cum claustro*”, Schiaparelli, 1902) internally flanked at east by another structure. The building, a square in plan with a 5 floors vertical distribution, has its ground entrance at north, aligned with a second one on the first floor, maybe the real safe entrance accessible by removable ladder, windows with marble frames lay aligned in upper floors. On the ground level a concrete cross vault divides it from the first floor to which a manhole is the only connection, aligned with the one still visible on the roof (maybe one on each floor was once present). The survey was realized in a very short time for the limited time access, using two UAVs, a DJI Phantom 4Pro (Ph4Pro) and a DJI Phantom4 (Ph4). To grant the accuracy in georeferencing the model, it is necessary in the final model not to keep the drone internal coordinates (exif data) but to apply an indirect georeferencing. So 12 control points were materialized on ground (50x50cm Forex targets with spherical bubble were centered on 20cm iron nails) and surveyed by a GPS antenna (Zenith 25 Geomax) in RTK mode, in WGS84 coordinates, setting a cut off angle of 15°, reaching a visibility from 11 to 18 GPS and GLONASS satellites, accuracy 5cm. The Ph4Pro, mounting a 8,8mm lens (24mm equiv.) and a 20Mp camera sensor (5472x3648pxl - 13,2x8,8mm - 1pix=0,002412mm - FOV: H 73.7°, V 53.1°, D 84°) flew for Nadir shootings in two orthogonal directions at 43m height (191shots, landscape 70% overlap) GSD 0.9cm, 1 picture representing in real 49,75x33,16m, picture scale 1/1666,6, final drawing normed scale 1/150 (effect. 1:123), enough for ground mesh model. One more flight was in circle at 40 meters altitude oblique view to POI at 35m. Cause this flight aimed at surveying adequately the vault extrados and the tower last floor, a detail otherwise unreachable, we calculated a 24mm lens shooting at 10 meters flight distance from the tower top to get a picture scale 1/416,6 and a final drawing normed scale 1/10, so that selecting only pictures including vault and last floor details (among total of 180) it has been possible (keeping at first stage the exif data) to align them with those of the vertical walls taken as described below, keeping details we needed. More 293 pictures were taken by the Ph4, mounting a 3.5mm lens and a 12.2Mp camera sensor, (4000x30000pxl - 6,20x4,62mm - 1pix=0,00155mm - FOV: H81.27°, V 44.33°, D 94.02°) flying in circle, cause of trees obstacles, at 10, 20 and 30 m radial distance around central POI (point of interest indicated by its geographical coordinates) at 6 different heights from ground, GSD between 0,77cm and 1,10cm, camera in frontal and in oblique view at different heights to get any detail. The whole of 473 pictures was aligned (Photoscan Pro, Agisoft.RU), using a single chunk and initially not removing the GPS data (EXIF) coming from the two GPS antennas on drones (no accuracy data provided), then all exif data were removed and substituted by the imported GPS data surveyed by Zenith25 GPS, producing a georeferenced and high, accurate dense point cloud of 5.312.509 points. The calculated mesh resulted regular, regardless of different resolution of the camera drones’ sensors, lenses and flight distances, got 1,061,545 faces, 532,531 vertices, in medium quality selection, mild depth filtering, then textured with 4,096x4,096x8 (Atlas) (Figure 7).

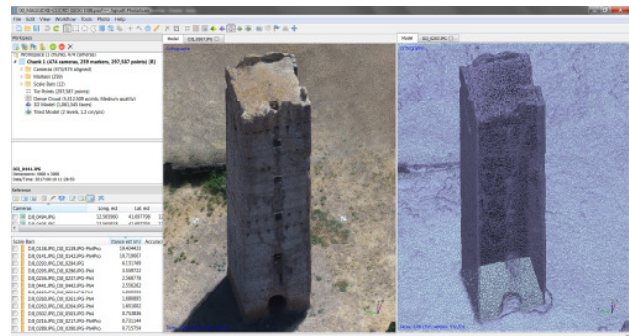


Figure 7. T. Maggiore. Final mesh, textured and wireframe

3.3.3 Torre Selce: facing the ancient Appia route just a few metres aside, this monument is characterized by a specific basement shape given by the pre-existence of a roman sepulchre on which the tower has been overbuild by the Astalli family, a redimen was present in origin and not visible anymore. To survey the high, star shaped basement the Canon 5D Mark III was mounted on a 5m extensible rod with a 24mm lens, shooting 480 pictures turning around the basement at 20 meters distance circa, each one representing in real 25,34x16,89m, picture scale 1/833, final normed drawing scale 1/50 (effective 1/31), resulting as aligned 411 of 480. The following survey operation has been realized standing at the base of the tower walls at +8m altitude from ground, using Xiaomi YI 4k action cam on 14 m extensible rod. Of the full set of 328 photos, 326 were successfully aligned thanks to the positioning of Photoscan coded targets (12bit, 20x20cm) and to the use of 60 topographic targets (20x20cm) widely distributed on ground around the tower and so included either in pictures taken from the hill’s top (by YI 4k) as on those looking from ground upward (by Canon5D MIII) (Figure 8).

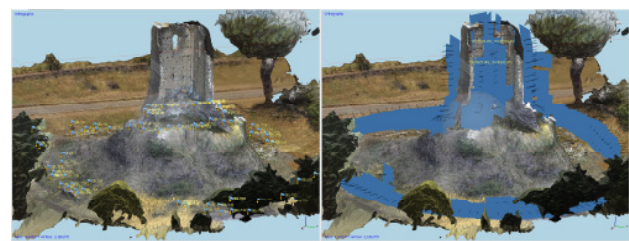


Figure 8. GPS and coded targets (left), shooting complex (right)

In any vertical stripe, along the external and internal walls till the top, respecting 1m distance between shots centers, some were oriented in landscape frontal view and some in oblique downward, so to include even the top parts and the otherwise hidden details. It resulted useful taking some sets of pictures turning 180° around each station, looking downward to the ground, to get all the 60 (20x20cm) targets distributed in the plain around the tower and later surveyed with GPS to geographically reference the model. In the alignment phase targets were identified in at least four pictures and the procedure worked as functional link for aligning in one single chunk Canon pictures and Yi action cam’s. The one pixel real dimension is 1,4mm, picture real scale 1/429, final normed drawing scale 1/10 (effective 1/8,6). The dense point cloud resulting for the joined elaboration (in medium quality) of all pictures has, 24,225628 points, while the mesh got 4,349,977 faces and 2,086,170 vertices. Considering the different drawing scale reached in each of the two pictures’ groups, it is suggested to considering calculating each one separately till the final

joining of resulting models, reachable by the common GPS points reference, so to grant a 1/10 drawing scale on the full tower body, useful for future detailed analyses.

4. THE DATABASE GIS INTEGRATION

One of the targets of this research is the collection of all data inside a single GIS Platform. This operation is necessary to make spatial analyses and to share the results on a 2D and 3D WEBGIS environment. For this goal it was used the Esri Platform ArcGIS Pro with the 3D Analysis Extension for Desktop Analysis and the cloud ArcGIS Online environment (by Educational license).

The first workflow step has been the creation of the GIS database, by using the desktop ArcGIS Pro 2.0, the premier professional desktop GIS application from Esri; it allowed the visualizing, editing, and analyzing of any geographic data in both 2D and 3D. After having created projects, maps, layers, tools and more, several options helped to sharing the work by using the ArcGIS Online Esri cloud platform. The access to several Basemaps (Satellite, Street and others) allowed getting a Geographic reference to geolocate any of our multiple research-related geographic contents:

- Historical Maps
- Towers geolocations
- Surveys (Drone and other)
- Open data (local or WMS connections)
- Analysis (RLOS e LLOS)

The geodata was stored in the Esri Geodatabase, the native data structure for ArcGIS and the primary data format used for data editing and management. While ArcGIS works with geographic information in many GIS file formats, it is designed to work with and to leverage the capabilities of the geodatabase.

Geodatabases have a comprehensive information model for representing and managing any geographic information. This model is implemented as a series of tables, holding feature classes, raster datasets, and attributes. In addition, advanced GIS data objects add GIS behavior, rules for managing spatial integrity and tools for working with numerous spatial relationships of the core features, raster, and attributes.

Even Historical maps in .tif format were georeferenced through Ground Control Points, using online basemaps as reference and then stored as Raster dataset in the Geodatabase. The actual Hydrology network, we used (whether still present) to highlight the existence of water paths near almost any tower or casale, is provided by the Lazio Region authority as Open Data WMS (web map service) connection. The Digital Terrain Model (pixel resolution 20 meters) was provided by The ISPRA (Istituto Superiore per la Protezione e la Ricerca Ambientale-<http://www.isprambiente.gov.it/it/banche-dati>) as Open Data.

This DTM was used to perform radial optical visibility analysis (RLOS-<http://solutions.arcgis.com/defense/help/military-tools/arcgis-pro/creating-radial-line-of-sight.htm>) assuming an observer to be placed on towers top at 21m and 35m height. The Intervisibility analysis (LLOS <http://solutions.arcgis.com/defense/help/military-tools/arcgis-pro/creating-linear-line-of-sight.htm>) was also performed between towers, providing useful information to support the research, as it is possible to verify the theories related to the

function of the towers relative to their surrounding area, involving properties extensions (when documented) by simulating their supposed original height.

Information about the photogrammetric surveys of towers made with the drone or through a vertical axis (described in the preceding chapters) has also been imported into the Geodatabase by converting the KMZ format.

The surveys carried out with the drone or through a camera mounted on a vertical axis (described in the preceding chapters) were also imported into the Geodatabase by converting the KMZ format.

These objects, within the Geodatabase, have been stored as three-dimensional Multipatch features, suitable for representing textured 3D meshes.

Regarding the Point Cloud survey models, ArcGIS Pro directly reads the LAS format and is able to use it as a 3D layer along with any other content by representing it with its original RGB colour components (Figure 9).

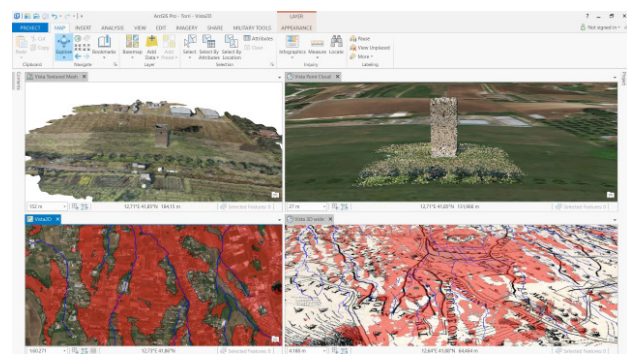


Figure 9. 2D/3D Geodatabase management with ArcGIS Pro

Following the creation and organization of the GIS, ArcGIS Pro is able to share the map data with the Esri ArcGIS Online cloud platform. ArcGIS Online is directly linked to ArcGIS Pro via web using enabled user connection.

ArcGIS Online is an online, collaborative web GIS that allows you host your GIS Data. Through this environment, it was possible to host all of the above mentioned survey data, creating custom maps and creating these 2D and 3D Web Apps that allow to viewing the results with a simple browser. These contents are hosted on the cloud and organized as REST services. In this environment, it has been possible to create 2D maps and 3D scenes using layers hosted in the ArcGIS Online cloud and also to connect to open source data such as OGC services or data made available by the user community. This was done with the Hydrography WMS (web map service), the free service provided by the Lazio Region.

Once created the 2D maps, it was possible to customize the data, to configure the fields with the associated information, and finally to customize the pop-ups.

After the making of map, custom web apps were created through some configurable templates, without having a specific knowledge of any development language. In the specific case, it has been used the "Basic Viewer" template, which contains the following functionalities:

