

## THE ACCURACY OF AUTOMATIC PHOTOGRAMMETRIC TECHNIQUES ON ULTRA-LIGHT UAV IMAGERY

O. Küng<sup>1,2</sup>, C. Strecha<sup>1,2</sup>, A. Beyeler<sup>3</sup>, J.-C. Zufferey<sup>3,4</sup>, D. Floreano<sup>4</sup>, P. Fua<sup>1,2</sup> and F. Gervais<sup>5,6</sup>

<sup>1</sup> EPFL-CVlab, <sup>2</sup> Pix4D LLC, <sup>3</sup> senseFly LLC, <sup>4</sup> EPFL-LIS, <sup>5</sup> heig-vd Yverdon, <sup>6</sup> R-Pod

**KEY WORDS:** Ultra-light UAV, mini-drone, photogrammetry, orthomosaic, DEM, automated georeferencing, aerial triangulation

### ABSTRACT:

This paper presents an affordable, fully automated and accurate mapping solutions based on ultra-light UAV imagery. Several datasets are analysed and their accuracy is estimated. We show that the accuracy highly depends on the ground resolution (flying height) of the input imagery. When chosen appropriately this mapping solution can compete with traditional mapping solutions that capture fewer high-resolution images from airplanes and that rely on highly accurate orientation and positioning sensors on board. Due to the careful integration with recent computer vision techniques, the post processing is robust and fully automatic and can deal with inaccurate position and orientation information which are typically problematic with traditional techniques.

### 1 INTRODUCTION

Fully autonomous, ultra-light Unmanned Aerial Vehicles (UAV) have recently become commercially available at very reasonable cost for civil applications. The advantages linked to their small mass (typically around 500 grams) are that they do not represent a real threat for third parties in case of malfunctioning. In addition, they are very easy and quick to deploy and retrieve. The drawback of these autonomous platforms certainly lies in the relatively low accuracy of their orientation estimates. In this paper, we show however that such ultra-light UAV's can take reasonably good images with large amount of overlap while covering areas in the order of a few square kilometers per flight.

Since their miniature on-board autopilots cannot deliver extremely precise positioning and orientation of the recorded images, post-processing is key in the generation of geo-referenced orthomosaics and digital elevation models (DEMs). In this paper we evaluate an automatic image processing pipeline with respect to its accuracy on various datasets. Our study shows that ultra-light UAV imagery provides a convenient and affordable solution for measuring geographic information with a similar accuracy as larger airborne systems equipped with high-end imaging sensors, IMU and differential GPS devices.

In the frame of this paper, we present results from a flight campaign carried out with the swinglet CAM, a 500-gram autonomous flying wing initially developed at EPFL-LIS and now produced by senseFly. The swinglet CAM records 12MP images and can cover area up to 10 square km. These images can easily be geo-tagged after flight using the senseFly PostFlight Suite that processes the flight trajectory to find where the images have been taken. The images and their geotags form the input to the processing developed at EPFL-CVLab. In this paper, we compare two variants:

- The first one consists of an aerial triangulation algorithm based on binary local keypoints. Its output is a geo-referenced orthomosaic together with a DEM of the surveyed area. In

its basic form, no ground control point (GCP) is used and the geo-localization process only depends on the GPS measurements (geotags) provided by the UAV. This is a fully automated, "one click" solution.

- Optionally, GCPs can be spotted in the original images and automatically taken into account by the algorithm to improve the geolocalisation accuracy. The procedure allows removal of the geo-location bias which is due to the geotag inaccuracy. Except for the GCP measurements on the field and determination on the original images, no other manual intervention is needed to produce the results.

Depending on the application, the burden of measuring GCP can be traded against a lower resulting accuracy. This suites various needs in terms of accuracy, time to result and cost. Growers or people engaged in field mission planning for instance may be interested obtain a quick survey in the form of a georeferenced orthomosaic produced fully automatically within minutes. We show that the accuracy without GCP lies in the range of 2m for low altitude imagery. With just a little bit more of human intervention, i.e. the designation of a couple of GCPs in the images, an accuracy of 0.05-0.2m can be achieved. This accuracy largely depends on the ground resolution of the original images as will be shown later on.

To the best of our knowledge, this paper presents the first demonstration that the combination of ultra-light UAV imagery *and* automated processing is possible and yields accurate results, comparable to the ones obtained with traditional photogrammetric systems mounted on airplanes. The main issue to achieve this is the imprecise measurements for the location and orientation of the individual images (Eisenbeiss and W.Stempfhuber, 2009). Recent techniques rooted in computer vision, their fast and scalable implementation and the robust integration to photogrammetric techniques are the main key to circumvent the lack of precise sensor information. The presented approach opens the door to a wide range of new applications and users which can now access geographic informations at an affordable cost and without any knowledge in photogrammetry. The temporal (4-dimensional)

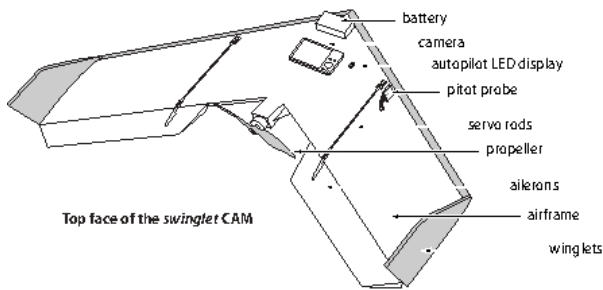


Figure 1: The swinglet CAM mini-UAV weighs 500 grams and has a wingspan of 80 cm. It is equipped with a pusher electric engine, a rechargeable and swappable lithium-polymer battery, two servo motors to control its elevons, a 12 MP pocket camera, an autopilot including rate gyroscopes, accelerometers, and GPS, a Pitot tube to measure airspeed and barometric altitude. Image courtesy of senseFly LLC.

analysis of local areas, as for instance the monitoring of reconstruction sites, becomes on one hand affordable because of the reduced cost of the hardware. Expensive helicopters or airplanes are replaced by ultra-light UAV's. The automated processing on the other hand reduces the labor cost substantially and makes such projects, which would normally require a lot of manual intervention using traditional photogrammetry techniques, feasible for the first time.

This paper is organized as follows. The next section provides an overview of the ultra-light UAV image capturing device used in this paper. Section 3 describes the whole processing chain that we applied in this test. It contains the evaluation of the accuracy of the two methods, which consists of a full bundle block adjustment over image correspondences with and without using ground control points. Several datasets are evaluated and the results are summarised in Section 4.

## 2 AERIAL IMAGE CAPTURE SYSTEM

The swinglet CAM (Figure 1) is an electrically-powered 500-gram flying wing<sup>1</sup> including a full-featured autopilot and an integrated 12 MP still camera. Its low weight combined with its flexible-foam airframe makes it particularly safe for third parties as it has approximately the same impact energy as a medium-sized bird. The swinglet CAM has a nominal airspeed of 10m/s, is capable of withstanding a moderate breeze of up to 7m/s and features a flight endurance of 30 minutes. It is launched by hand, which makes it particularly quick to deploy when compared to systems requiring a catapult of other launching facilities. It lands by gliding down in tight spirals, which makes the whole procedure particularly easy to program and monitor.

The built-in autopilot relies on a set of rate gyroscopes, accelerometers, pressure sensors and a GPS to compute and control the state of the UAV and to follow a 3D path defined by waypoints. The autopilot also manages the camera to enable good coordination.

<sup>1</sup>Initially developed at EPFL-LIS, this platform has been used for automated flight in cluttered environments (Zufferey et al., 2010) as well as collective behaviour experiments (Hauert et al., 2011)

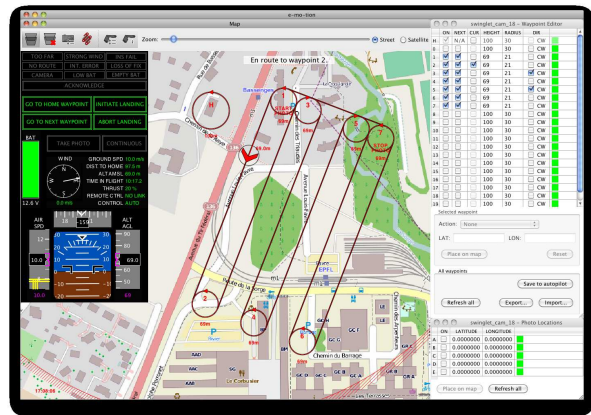


Figure 2: The e-mo-tion software is used to program and monitor the swinglet CAM through a wireless communication link. Image courtesy of senseFly LLC.

In particular, the picture taking process encompasses a pre-programmed set of actions in order to lower the risk of image blur due to vibrations or turbulences. To take a picture, the autopilot will first completely cut off the engine for a few seconds while stabilizing the plane in a level attitude before triggering the camera. Once this procedure is completed the normal navigation will resume and the small resulting altitude loss or path offset will be swiftly corrected by the normal flight controller.

The swinglet CAM comes with a software called e-mo-tion (Figure 2), which connects to the autopilot by means of a 2.4 GHz radio modem within a range of up to 2km. This application can be installed on almost any computer running Windows or MacOS. It features a map window on which waypoints can easily be dragged and dropped to build a flight plan or edit it. This process can take place either before or during flight. Since all waypoint changes are directly sent and stored onboard the autopilot, a temporary loss of communication will not prevent the swinglet from continuing its mission. In addition to programming the flight path, e-mo-tion serves many other purposes such as monitoring the status of the mini-UAV, logging flight data for further analysis and processing after the flight, programming where and how often aerial images should be taken, displaying estimated image footprints on the map in real-time, etc.

For photogrammetric flights, the swinglet can be programmed to take pictures in a systematic way while flying along its flight plan between every pair of waypoints. E-mo-tion also includes a tool to automatically create flight plans to systematically cover some designated area. This tool will position and configure a set of waypoints to achieve the desired ground resolution (typically between 3 and 30cm corresponding to 80 to 800m flight altitude above ground) as well as longitudinal and lateral image overlap.

An additional piece of software named PostFlight Suite allows you to process the data acquired in flight in order to replay the 3D flight trajectory in Google Earth™ (Figure 3) or to geotag the acquired images on the basis of the recorded flight log. These geotags present a typical accuracy of 5-10m in position and of 3 – 5° in orientation. After having been tagged, the series of images can then be uploaded directly from PostFlight Suite (SenseFly,

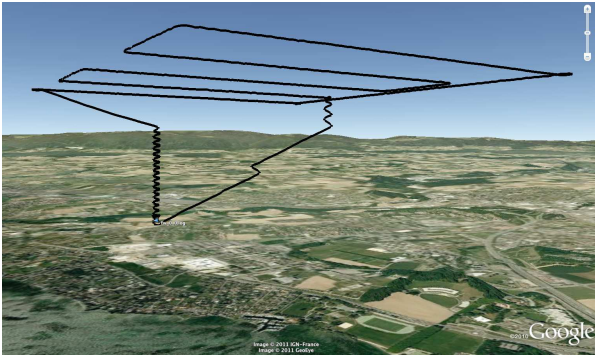


Figure 3: Example of a real 3D flight trajectory as produced by the PostFlight Suite software and displayed in Google Earth™ for visualization.

2011a) onto a web-based server powered by Pix4D (Pix4D, 2011) to automatically produce orthomosaics and digital elevation models (DEM).

### 3 AUTOMATED DATA PROCESSING

The web-based service that can automatically process up to 1000 images, is fully automated and requires no manual interaction. Geo-referenced orthomosaic and DEM can be obtained in principle without the need for ground control points. However, as shown in the various examples provided in this section, more accurate results can be obtained by using GCP. The software performs the following steps:

- The software searches for matching points by analyzing all uploaded images. Most well known in computer vision is the SIFT (Lowe, 2004) feature matching. Studies on the performance of such feature descriptors are given in (Mikolajczyk and Schmid, 2002). We use here binary descriptors similar to (Strecha et al., 2011), which are very powerful to match keypoints fast and accurate.
- Those matching points as well as approximate values of the image position & orientation provided by the UAV autopilot are used in a bundle block adjustment (Triggs et al., 2000, Hartley and Zisserman, 2000) to reconstruct the exact position and orientation of the camera for every acquired image (Tang and Heipke, 1996).
- Based on this reconstruction the matching points are verified and their 3D coordinates calculated. The geo-reference system is WGS84, based on GPS measurements from the UAV autopilot during the flight.
- Those 3D points are interpolated to form a triangulated irregular network in order to obtain a DEM. At this stage, at dense 3D model (Scharstein and Szeliski, 2002, Strecha et al., 2003, Hirschmiller, 2008, Strecha et al., 2008b) can increase the spatial resolution of the triangle structure.
- This DEM is used to project every image pixel and to calculate the georeferenced orthomosaic (also called true orthophoto) (Strecha et al., 2008a).

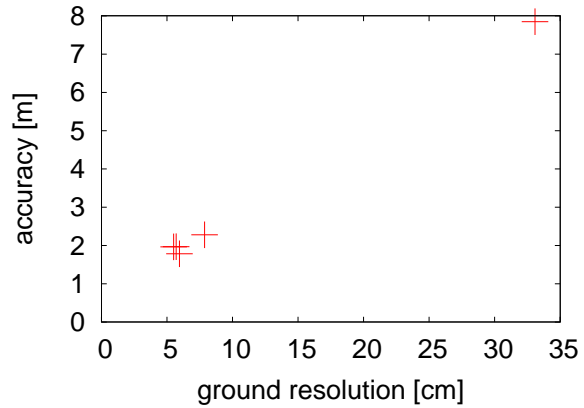


Figure 4: Dependency of the accuracy from the ground resolution (Ground sampling distance) of the original images for various datasets **without using GCPs** for the reconstruction (“geotags only”).

In order to assess the quality and accuracy of this automated process, we consider here several projects that differ with respect to the coverage area, ground resolution, overlap between original images and the number of images. For all datasets we measured GCPs, which we then used to evaluate the precision of the automated reconstruction. Thereby we evaluated two different methods. One is purely based on the geotags of each original image as provided by the UAV autopilot and one which in addition also takes manually designated GCPs into account. For both we measure the accuracy of the result as the mean distance between the triangulated GCPs  $x_j$ , as optimized by Eq. 1 and the GCP positions  $X_j$  as obtained by a high-precision GPS receiver on the ground. Let  $p_{ij}$  be the position of GCP  $j$  in image  $i$ . The collection of all  $p_{ij}$  for a given GCP  $j$  give rise to a 3D point  $x_j$  that minimize the projection error:

$$\sum_i (\mathbf{P}_i(x_j) - p_{ij})^T \Sigma_{ij}^{-1} (\mathbf{P}_i(x_j) - p_{ij}) \rightarrow \min(x_j), \quad (1)$$

where  $\mathbf{P}_i(x_j)$  performs the projection of  $x_j$  into image  $i$  and  $\Sigma_{ij}$  describes the accuracy of the  $p_{ij}^{th}$  GCP when measured in image  $i$ . The accuracy of the reconstruction is then measured by the variance  $\sigma$ :

$$\sigma^2 = \frac{1}{N_j} \sum_j (X_j - x_j)^2, \quad (2)$$

Note that  $X_j$  and  $x_j$  are 3-vectors such that Eq. 2 measures the variance of a three dimensional distance.

The accuracy in Eq. 2 can be computed by taking the GCPs into account when performing the reconstruction, which is referred to as “including GCPs” in the results section below and can be computed without using them (“geotags only”).

To assess both approaches, we applied our method with and without GCP to three datasets. They are shown in Figures 1, 3 and 5 and differ with respect to the ground resolution of the original images, the amount of images and the area they cover. We show in these Figures the resulting orthomosaic and DEM for each of

number images	ground resolution	flying height	area	number GCPs
51	33.08cm/pixel	900m	8km <sup>2</sup>	13

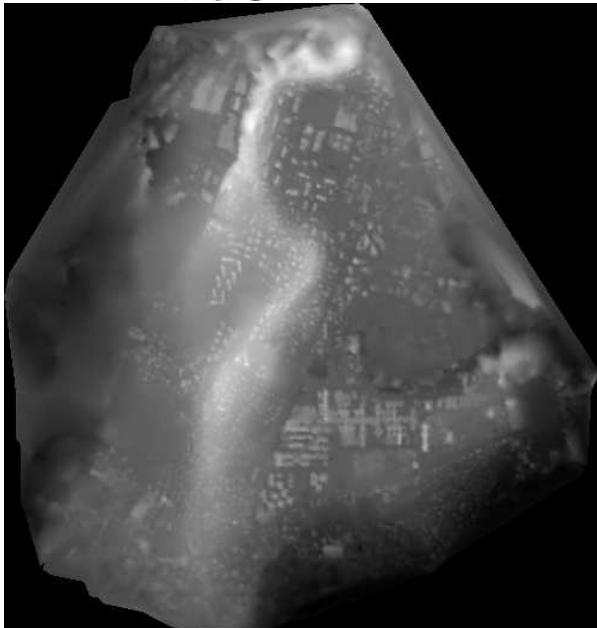
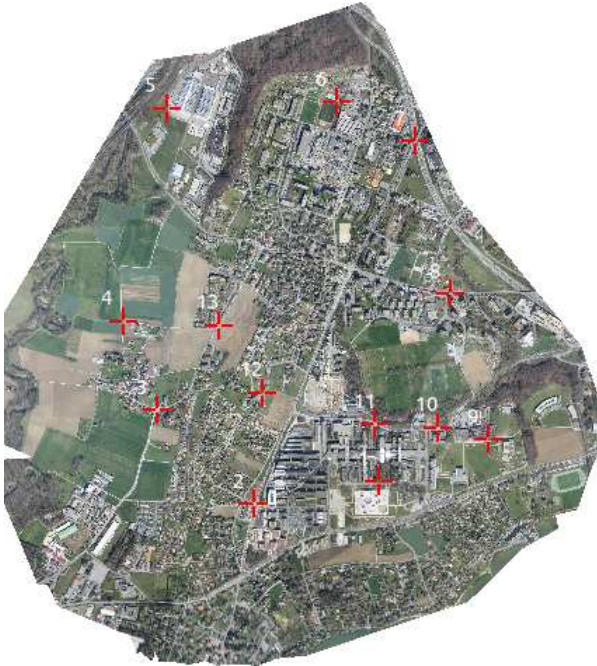


Table 1: Ecublens Dataset: The table contains the specification of this dataset. We show furthermore the orthomosaic with the GCPs in red and the DEM.

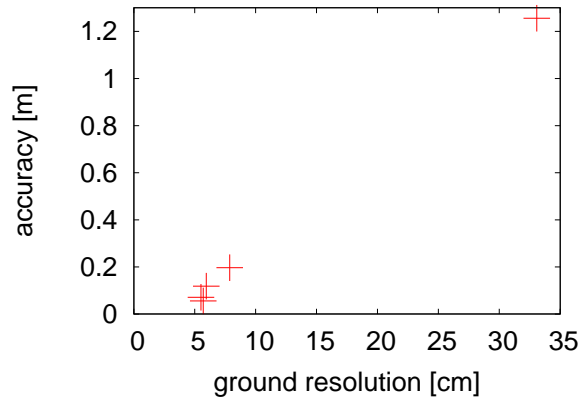


Figure 5: Dependency of the accuracy from the ground resolution (Ground sampling distance) of the original images for various datasets **by using GCPs** for the reconstruction (“including GCPs”).

the datasets. These and more datasets are available for closer visualization on ([SenseFly, 2011b](#)).

The accuracy results for each of the three datasets are shown in Tables 2, 4 and 6. We report the accuracy  $\sigma$  from Eq. 2 for the two reconstruction methods “including GCPs” and “geotags only” as well as the accuracies  $\sigma_x, \sigma_y, \sigma_z$  in each coordinate direction.

In Figures 4 and 5, we plot the accuracy  $\sigma$  as a function of the image ground resolution for the three datasets above and for two others for which we cannot show detailed results due to space limitation. All experiments confirm the expected dependency of the accuracy on the ground resolution of the original images. We can conclude that the accuracy lies between 0.05-0.2m when including GCPs and 2-8m with the no-manual-intervention variant. However, this accuracy can not be achieved for all parts of the orthomosaic. Some areas might not be very well textured or could contain large discontinuities in depth (for instance near building boundaries or thin tree structures). For those areas the accuracy will be slightly worse. To evaluate this, more experiments with LiDAR as ground truth are necessary ([Strecha et al., 2008b](#)).

The accuracy figures presented here could be further improved by following a traditional photogrammetric work-flow ([R-Pod, 2011](#)), that includes manual intervention to define more stable control points. This strategy might especially be necessary when the image quality and overlap is insufficient for an automated work-flow.

#### 4 SUMMARY

We presented a robust and automatic work-flow which can deal with the fact that ultra-light UAVs provide only relatively inaccurate information about the position and orientation of the captured images. This limited accuracy would typically pose a problem for traditional photogrammetric work-flows which require a lot of manual labor to achieve results. The presented post processing make use of recent and robust computer vision techniques to

	GCPs error [m]	
	geotags only	including GCPs
$\sigma$	7.84	1.25
$\sigma_x$	2.45	0.37
$\sigma_y$	4.40	0.38
$\sigma_z$	5.42	1.07

Table 2: Ecublens Dataset: The accuracy of the geolocation (top) and the original image geotags (bottom) are given. At approximately 40 cm ground resolution and with GCPs acquired by google the mean localisation error is 1.25m by using and about 8m without using GCPs.

overcome this problem. We believe that this approach will enable a range of decision-makers to create their own maps on the spot and on demand. This can be very useful in many fields such as agriculture, land management, forestry, humanitarian aid, mission planning, mining, architecture, archeology, urban planning, geology, wild life monitoring, forestry and many others.

We can conclude that the accuracy lies between 0.02-0.2m depending on the ground resolution of the original images. However, this accuracy can not be achieved for all parts of the orthomosaic. Some areas might not be very well textured or could contain large discontinuities in depth (for instance near building boundaries or thin tree structures). For those areas the accuracy will be worse.

To evaluate this, more experiments with LiDAR as ground truth are necessary (Strecha et al., 2008b).

#### ACKNOWLEDGMENTS

#### REFERENCES

- Eisenbeiss, H. and W.Stempfhuber, 2009. Genauigkeitsanalyse der 3D-Trajektorie von Mini-UAVs. In: Zukunft mit Tradition: 29. Wissenschaftlich-Technische Jahrestagung der DGPF, pp. 407–417. 1
- Hartley, R. and Zisserman, A., 2000. Multiple View Geometry in Computer Vision. 3
- Hauert, S., Leven, S., Varga, M., Ruini, F., Cangelosi, A., Zuferey, J. and Floreano, D., 2011. Reynolds flocking in reality with fixed-wing robots: communication range vs. maximum turning rate. In: Proceedings of the IEEE/RSJ International Conference on Intelligent Robots and Systems. 2
- Hirschmiller, H., 2008. Stereo processing by semiglobal matching and mutual information. IEEE Trans. Pattern Anal. Mach. Intell. pp. 328–341. 3
- Lowe, D., 2004. Distinctive Image Features from Scale-Invariant Keypoints. IJCV 20(2), pp. 91–110. 3
- Mikolajczyk, K. and Schmid, C., 2002. An Affine Invariant Interest Point Detector. In: ECCV, pp. 128–142. 3
- Pix4D, 2011. Hands free solutions for mapping and 3D modeling "www.pix4d.com". 3

number images	ground resolution	flying height	area	number GCPs
526	7.87cm/pixel	262m	2.1km <sup>2</sup>	19

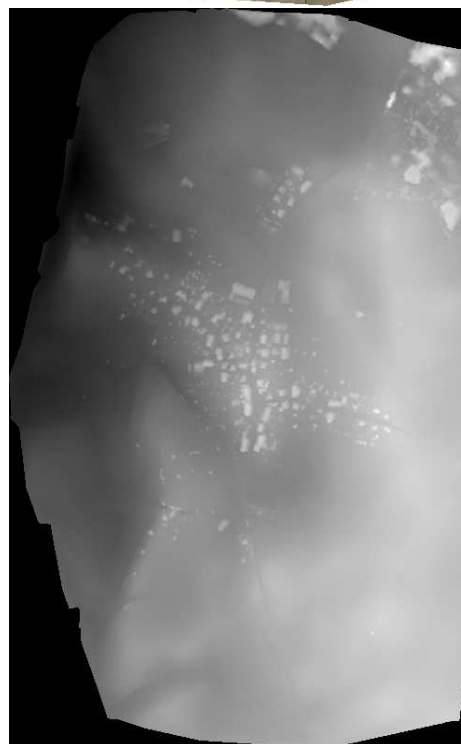


Table 3: Penthereaz Dataset: The table contains the specification of this dataset. We show furthermore the orthomosaic and the DEM.

	GCPs error [m]	
	geotags only	including GCPs
$\sigma$	2.28	0.19
$\sigma_x$	0.50	0.130
$\sigma_y$	1.76	0.117
$\sigma_z$	1.29	0.045

Table 4: Penthereaz Dataset: The accuracy of the geolocation (GCPs) and the original image geotags are given. At approximately 6 cm ground resolution and with GCPs acquired by a high accuracy GPS receiver the mean localisation error is 20cm by using and about 2.3m without using GCPs.

number images	ground resolution	flying height	area	number GCPs
73	5.7cm/pixel	130m	0.13km <sup>2</sup>	12

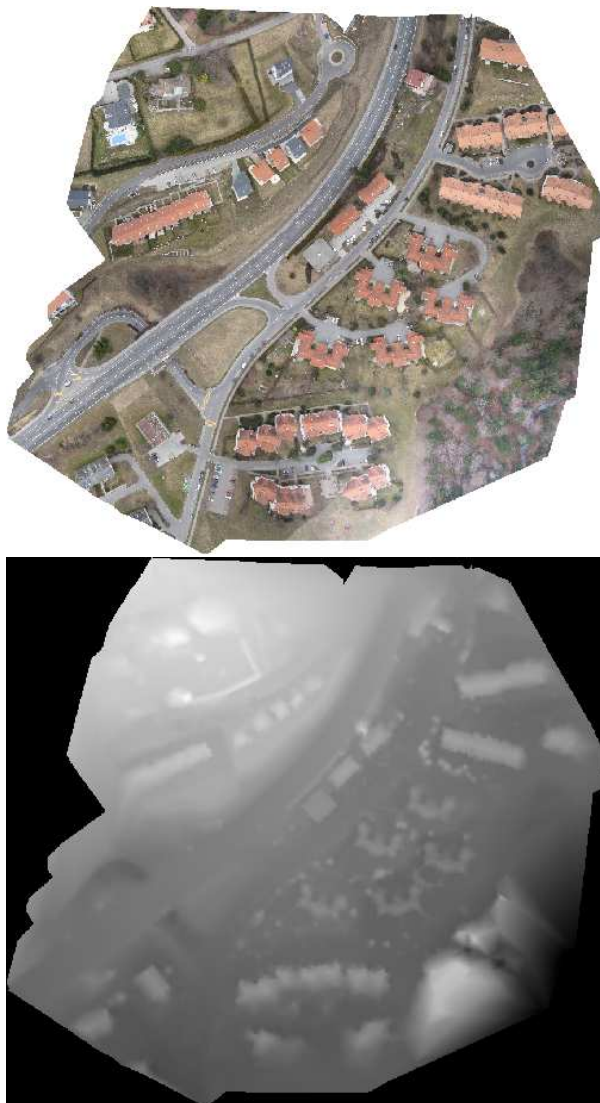


Table 5: Epalinges Dataset: The table contains the specification of this dataset. We show furthermore the orthomosaic and the DEM.

	GCPs error [m]	
	geotags only	including GCPs
$\sigma$	1.97	0.056
$\sigma_x$	0.58	0.028
$\sigma_y$	0.65	0.038
$\sigma_z$	1.76	0.017

Table 6: Epalinges Dataset: The accuracy of the geolocation (GCPs) and the original image geotags is given. At approximately 6 cm ground resolution and with GCPs acquired by a high accuracy GPS receiver the mean localisation error is 6cm by using and about 2m without using GCPs.

R-Pod, 2011. Photogrammetry On Demand "[www.r-pod.ch](http://www.r-pod.ch)". 4

Scharstein, D. and Szeliski, R., 2002. A Taxonomy and Evaluation of Dense Two-Frame Stereo Correspondence Algorithms. IJCV 47(1/2/3), pp. 7–42. 3

SenseFly, 2011a. "[www.sensefly.com](http://www.sensefly.com)". 3

SenseFly, 2011b. Example datasets for mapping "[www.sensefly.com/applications/mapping](http://www.sensefly.com/applications/mapping)". 4

Strecha, C., Bronstein, A., Bronstein, M. and Fua, P., 2011. LDA-Hash: improved matching with smaller descriptors. IEEE Transactions on Pattern Analysis and Machine Intelligence. 3

Strecha, C., Gool, L. V. and Fua, P., 2008a. A generative model for true orthorectification. Proceedings of the International Society for Photogrammetry and Remote Sensing (ISPRS). 3

Strecha, C., Tuytelaars, T. and Gool, L. V., 2003. Dense matching of multiple wide-baseline views. Proceedings of the International Conference on Computer Vision (ICCV) pp. 1194–1201. 3

Strecha, C., von Hansen, W., Gool, L. V., Fua, P. and Thoennessen, U., 2008b. On benchmarking camera calibration and multi-view stereo for high resolution imagery. Proceedings of the IEEE Conference on Computer Vision and Pattern Recognition pp. 1–8. 3, 4, 5

Tang, L. and Heipke, C., 1996. Automatic relative orientation of aerial images. Photogrammetry and Remote Sensing 62(1), pp. 47–55. 3

Triggs, B., McLauchlan, P., Hartley, R. and Fitzgibbon, A., 2000. Bundle Adjustment – a Modern Synthesis. In: Vision Algorithms: Theory and Practice, pp. 298–372. 3

Zufferey, J.-C., Beyeler, A. and Floreano, D., 2010. Autonomous flight at low altitude using light sensors and little computational power. International Journal of Micro Air Vehicles 2, pp. 107–117. 2