

DEM GENERATION FROM HIGH RESOLUTION SATELLITE IMAGES THROUGH A NEW 3D LEAST SQUARES MATCHING ALGORITHM

Taejung Kim, Sooahm Rhee

Department of Geoinformatic Engineering, Inha University, 253 Yonghyun-Dong, Namgu, Incheon Korea
tezid@inha.ac.kr, ahmkun@inha.edu

Commission I, WG I/4

KEY WORDS: Matching, DEM, Least Squares Estimation, High Resolution Satellite images

ABSTRACT:

Automated generation of digital elevation models (DEMs) from high resolution satellite images (HRSIs) has been an active research topic for many years. However, stereo matching of HRSIs, in particular based on image-space search, is still difficult due to occlusions and building facades within them. Object-space matching schemes, proposed to overcome these problem, often are very time consuming and critical to the dimensions of voxels. In this paper, we tried a new least square matching (LSM) algorithm that works in a 3D object space. The algorithm starts with an initial height value on one location of the object space. From this 3D point, the left and right image points are projected. The true height is calculated by iterative least squares estimation based on the grey level differences between the left and right patches centred on the projected left and right points. We tested the 3D LSM to the Worldview images over 'Terrassa Sud' provided by the ISPRS WG I/4. We also compared the performance of the 3D LSM with the correlation matching based on 2D image space and the correlation matching based on 3D object space. The accuracy of the DEM from each method was analysed against the ground truth. Test results showed that 3D LSM offers more accurate DEMs over the conventional matching algorithms. Results also showed that 3D LSM is sensitive to the accuracy of initial height value to start the estimation. We combined the 3D COM and 3D LSM for accurate and robust DEM generation from HRSIs. The major contribution of this paper is that we proposed and validated that LSM can be applied to object space and that the combination of 3D correlation and 3D LSM can be a good solution for automated DEM generation from HRSIs.

1. INTRODUCTION

Understanding the exact shape of the earth surface has been one of the primary goals of the modern science. It will enable precise biophysical study of the earth environments and accurate analysis of human effects on the earth environments. Very powerful sources to capture the earth surface shape are high resolution satellite images (HRSIs). They are free from accessibility and can be obtained globally consistently. They offer cost-effective and visible data to model the earth surface. Hence, automated generation of DEMs from HRSIs has been an active research topic for many years.

It is known that stereo matching of HRSIs is difficult due to singularities caused by the intrinsic nature of them, such as occlusions and building facades (Kim, 2005). Height profiles generated from HRSIs are often very crude and contain blunders or holes. In many occasions there is little improvement in DEMs from HRSIs compared to those from medium resolution images. For this reason multiple optical images (Okutomi and Kanade, 1996; Gruen and Baltsavias, 1998), instead of two, or other data sources, such as laser scanner data and differential SAR data, are utilized for DEM generations.

In this paper, we report our work on automated DEM generation from stereo pairs of HRSIs. We are pursuing our research under the activities of the ISPRS WG I/4 on 'benchmarking and quality analysis of DEM generated from high and very high resolution optical stereo satellite data' and we report our interim results. We propose a new matching scheme for automated DEM generation that utilizes least squares correlation matching in an object space. We compare the new matching scheme with existing ones and combine them together for reliable DEM extraction.

We believe that the reason for the failure of producing DEMs of good quality lies in matching schemes. Most of stereo matching algorithms proposed for HRSIs are based on image-space search. For an image point within a reference image, its corresponding image point within a target image is searched for (Lee et al., 2003). This scheme may work well with medium resolution images, where the singularities are rarely observed. This scheme, however, is vulnerable for HRSIs, where image points often lie on the singularities. To overcome this problem, we believe that matching has to be performed in an object space with a more intelligent correspondence search scheme.

On the other hands, object-space matching schemes define voxels within a 3D object space, project each voxel onto the left and right image spaces, and check similarities by grey-level correlation. Often they are very time consuming and critical to the dimensions of voxels. This method may not produce better performance to the matching algorithms based on the image space.

In this paper, we tried a new least square matching (LSM) algorithm that works in a 3D object space. The algorithm starts with an initial height value on one location of the object space. From this 3D point, the left and right image points are projected. The true height is calculated by iterative least squares estimation based on the grey levels of the left and right patches centred on the projected left and right points. This 3D LSM can overcome the problems of the image space matching since the projected image points will not lie on the singularities. The 3D LSM will overcome the problems of the conventional object space matching algorithms since there is no need to define the voxel dimensions.

We tested the 3D LSM to the Worldview images over ‘Terrassa Sud’ provided by the ISPRS WG I/4. We compared the performance of the 3D LSM with the correlation matching based on 2D image space, (Lee et al., 2003) and a correlation matching based on 3D object space. The accuracy of the DEM from each method was analysed against the ground truth. Test results showed that 3D LSM offers more accurate DEMs over the conventional matching algorithms. Results also showed that 3D LSM is sensitive to the accuracy of initial height value to start the estimation. We combined the 3D correlation matching and 3D LSM for accurate and robust DEM generation from HRSIs.

2. 3D LEAST SQUARES MATCHING METHOD

This section describes a new least square matching method based on the 3D object space, 3D LSM. The LSM based on the 2D image space (2D LSM) is a well-known method to produce accurate DEMs image matching method (Gruen, 1985). However, 2D LSM is sensitive to initial position values. If the initial value does not lie within pull-in ranges, the solution will not converge to the right one. To minimize this effect used are good initial positions from existing DEMs or tie-point matching results. Because of these characteristics, 2D LSM is often used to improve performance of the 2D correlation matching.

The proposed 3D LSM method utilized the relationship between the sensor and the object space in matching. This method is different from the previous 2D LSM method that works in 2D image space. The 2D LSM minimizes the grey level difference between the left and right patches by iteratively changing the image positions. For image position change and for establishing observation matrix, 2D transformation equations such as affine transformation are used. The 3D LSM minimizes the grey level difference between the left and right patches by iteratively changing the surface heights for a fixed object location X and Y. For height change and establishing observation matrix, the geometric models between the sensor and the object space are used.

When 3D coordinates X, Y, H are given, image coordinates are related to 3D coordinates by equation (1).

$$\begin{aligned} c_l &= P_l(X, Y, H) & r_l &= Q_l(X, Y, H) \\ c_r &= P_r(X, Y, H) & r_r &= Q_r(X, Y, H) \end{aligned} \quad (1)$$

where, c_l and r_l are image coordinates of the left image, c_r and r_r are image coordinates of the right image and P and Q are the geometric models between the sensor and the object space. When F and G are the grey-level functions for an image point (c, r), we have the equation (2).

$$F(c_l, r_l) = G(c_r, r_r) \quad (2)$$

This observation equation is extended by the Taylor series as follows.

$$\begin{aligned} F(c_l, r_l) &= F(c_{l0}, r_{l0}) + \frac{\delta F(c_{l0}, r_{l0})}{\delta c_l} dc_l + \frac{\delta F(c_{l0}, r_{l0})}{\delta r_l} dr_l \\ &= F(c_{l0}, r_{l0}) + f_c dc_l + f_r dr_l \\ G(c_r, r_r) &= G(c_{r0}, r_{r0}) + \frac{\delta G(c_{r0}, r_{r0})}{\delta c_r} dc_r + \frac{\delta G(c_{r0}, r_{r0})}{\delta r_r} dr_r \\ &= G(c_{r0}, r_{r0}) + g_c dc_r + g_r dr_r \end{aligned} \quad (3)$$

According to equation (1), we can compute the differential equations of image coordinate by equation (4).

$$\begin{aligned} dc_l &= \frac{\delta P_l(X, Y, H)}{\delta H} dH = p_l dH & dr_l &= \frac{\delta Q_l(X, Y, H)}{\delta H} dH = q_l dH \\ dc_r &= \frac{\delta P_r(X, Y, H)}{\delta H} dH = p_r dH \\ dr_r &= \frac{\delta Q_r(X, Y, H)}{\delta H} dH = q_r dH \end{aligned} \quad (4)$$

A combination of equation (3)-(4) yields

$$G(c_{r0}, r_{r0}) - F(c_{l0}, r_{l0}) = (f_c p_l + f_r q_l - g_c p_r - g_r q_r) dH \quad (5)$$

The above equation can be used for finding H iteratively through least squares estimation. In the above equation, dH is the only unknown. It means that this method is more convenient to calculate and easier to limit the search scope than traditional methods. This method creates a virtual plain on the 3D-coordinate, and H values are changed to find the best match. This method performs matching with the fixed X and Y. Therefore, by selecting X and Y values for DEM grids, this method eliminates the need for DEM interpolation.

This method is suitable to apply the pyramid image matching. In general, a pyramid image matching method stores matching results in low resolution matching and uses these results as initial points for higher resolution matching. 3D LSM may adopt this scheme. 3D LSM can also apply pyramid matching differently by using image patches at different resolution and including all image patches simultaneously for least squares estimation. For a 3D object point with a given height, its image positions in the left and right images are calculated and the left and right patches at different resolutions are generated and used for LSM. This multi-layered matching scheme may decrease mis-matching rates as lower resolution image patches prevent mismatches. This may increase match precision as higher resolution image patches enables matching at finer scale. Figure 1 shows the difference between general and proposed pyramid matching method.

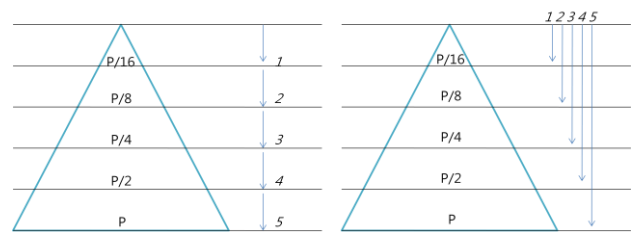


Figure 1. Pyramid image stepwise application (Left: general method, Right: proposed method)

While setting the left and right image patches for brightness value correlation, larger patches may reduce errors but the precision decreases. On the other hand smaller patches can produce more detailed representation of DEMs, but errors are increased. For resolving these problems and to improve the matching performance, we have given weight to image patches at different scales. The 2D Gaussian distribution was used to weight definition. The general form of 2D Gaussian distribution is given as

$$G_\sigma = \frac{1}{2\pi\sigma^2} e^{-\frac{x^2+y^2}{2\sigma^2}} \quad (6)$$

where σ is the scale parameter of Gaussian kernel. We determine the optimum sigma value is 0.2 times of search window size by experiments.

3. DATASET

We used one of the dataset over Terrasa, Spain provided by the ISPRS working group I/4. The dataset consisted of two Worldview-1 images were at a resolution of about 0.5m and the reference DEM at 1m grid spacing acquired from LIDAR. The image size was 10000x10000 pixels and captured in August, 2008. Figure 2 and 3 show the images used and the reference DEM. Table 1 summarizes the properties of the area used for DEM extraction.

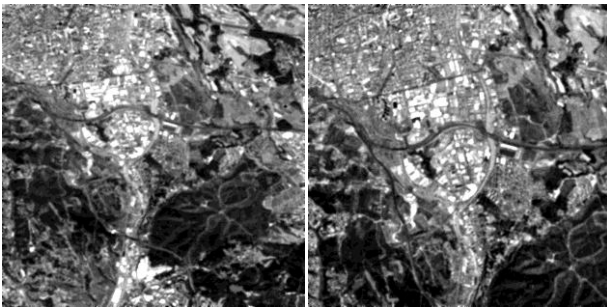


Figure 2. Worldview-1 Stereo images

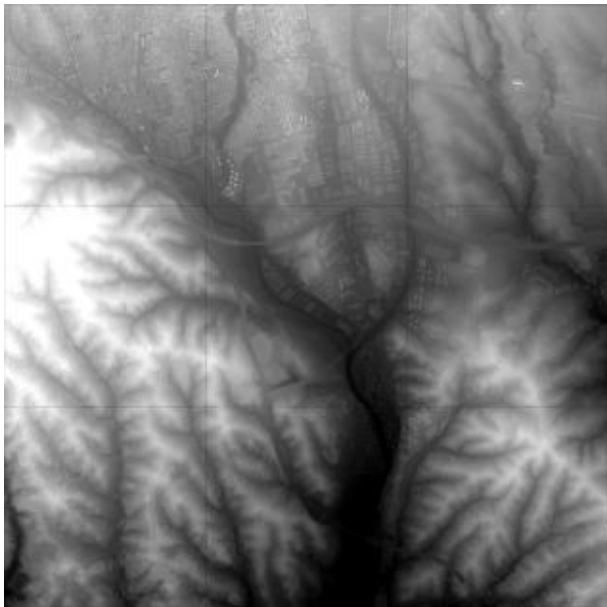


Figure 3. Reference DEM derived from LIDAR data of Terrassa.

Table 1. Properties of the Terrassa area

Lower left (UTM31N, WGS84)	Area size	Area type
417400E 4597300N	4km x 4km	City, industrial, residential

For the generation of accurate DEMs, the RFM (Rational Function Model) was used. To update RFM models, ground control points (GCPs) were obtained from the LIDAR data. For the left and right images, 11 GCPs were collected. They were used to calculate the bias correction parameters. The accuracy

of the sensor model was found to be within 1 Pixel as shown in Table 2.

Table 2. Properties of the Terrassa area

	Scene 1	Scene 2
Col RMSE (Pixel)	0.7999	0.6806
Row RMSE (Pixel)	0.7157	0.3000
Magnitude (Pixel)	1.0733	0.7438

4. RESULTS AND DISCUSSIONS

Performance of 3D LSM

3D LSM was applied to the test dataset and a DEM at 2.5m grid spacing was generated. The accuracy of the DEM generated was compared with the reference DEM. For accurate verification of matching algorithm performance, we did not apply any post-process such as interpolation or image filtering. Through 3D LSM, 3,493,064 points were matched out of total 4,052,229 DEM grid points; this shows 86% of matching success rate. All match points were compared with the height in the reference DEM. In Table 3, the results show that the RMSE (Root Mean Square Error) was about 3.9m and the MAE (Mean Absolute Error) was about 2.3m. The average error was 0.1670m, showing that no significant biases were introduced in the DEM generated.

Table 3. Accuracy test results of generated DEM by 3D-LSM

Num of Matched Points	Num. of Hole	Blunder Rate (Over 10m)	AVG (m)	MAE (m)	RMSE (m)
3,493,064	559,165	2.788%	-0.1670	2.2634	3.9023

Comparison of different matching schemes

The performance of 3D LSM was compared with other matching schemes, 2D correlation matching and 3D correlation matching developed in-house (Lee et al., 2003; Kim, 2005). All three matching algorithms were applied to the test data under the same condition. Figure 4 shows the DEMs generated. As before, no error correction or filtering operations were applied. For 2D correlation, the DEM was generated by nearest neighbour interpolation with very small interpolation radius (2,5m) and for others no interpolation was applied. All matched points matched points were compared against the reference DEM and table 4 summarizes the DEM accuracy test results

According to the results, the DEM from 2D correlation produced largest matched points with least accuracy. The blunder rate was over 6.5%. The DEMs from 3D correlation and 3D LSM showed much improved accuracy. This supports that the matching schemes performed in 3D object space could bypass the singularity problems of the matching in 2D image space. We can also compare the accuracy from the histograms in figure 5 and conclude that object space matching produced better results than the image space matching for HRSIs.

Table 4. DEM accuracy test results (Total 4,052,229 Points)

	Num of Matched Points	Num. of Hole	Blunder Rate (Over 10m)	MAE(m)	RMSE(m)
2D Correlation	3,936,422	115,807	6.567%	3.3250	5.8269
3D Correlation	3,906,459	145,770	2.825%	2.4676	4.0088
3D LSM	3,493,064	559,165	2.788%	2.2634	3.9023

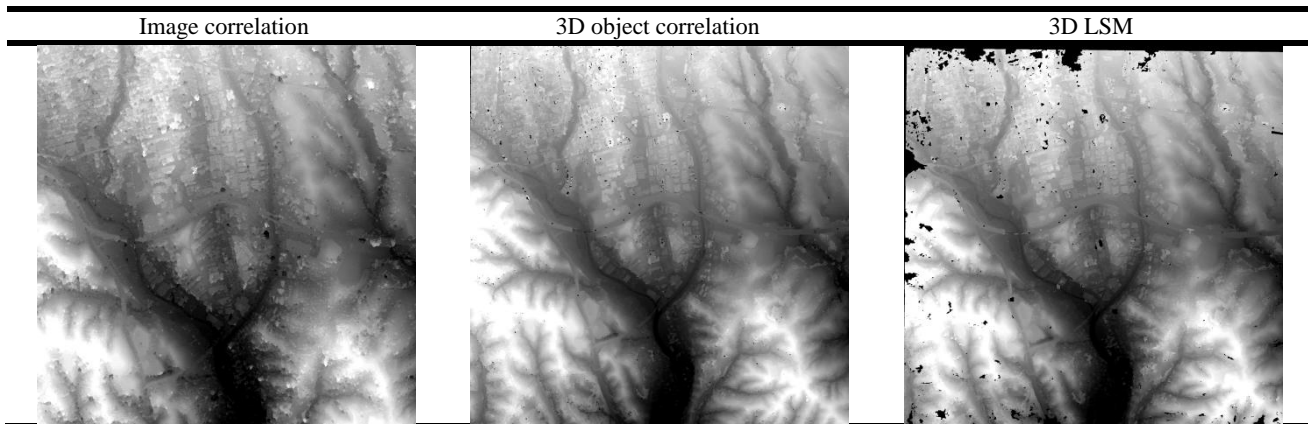


Figure 4. Generated DEM images

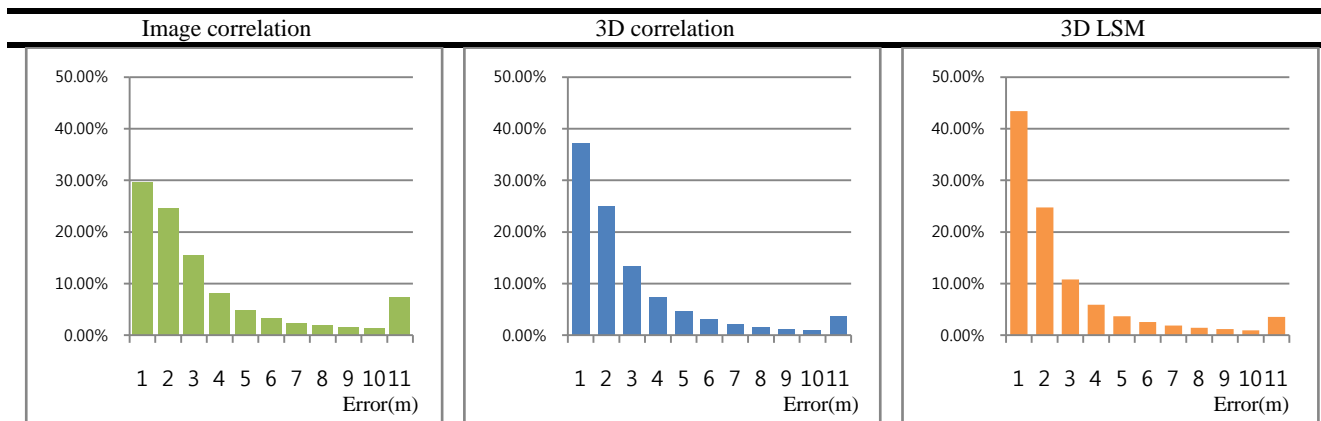


Figure 5. Histogram of DEM Accuracy

Between the two object space matching schemes, 3D LSM produced more accurate results but it also produced a lot of holes. This is because least squares estimation requires good initial points. Similar to the 2D case, LSM in 3D object space also required good initial heights.

Combination of 3D Correlation and 3D LSM

Based on these results, we could combine 3D correlation with 3D LSM to overcome the problem of 3D LSM and to produce the DEM with better accuracy. For this, we applied 3D LSM by using the heights generated from 3D correlation as initial heights.

In Table 5, the combination of 3D correlation and 3D LSM outperformed each individual matching scheme. Notably, the DEM from 3D correlation showed the significant bias of nearly 0.8 m and this was removed by 3D LSM. Figure 6 shows the DEM from the combination of 3D correlation and 3D LSM. By combining the two, the most of holes from 3D LSM were removed.

In 2D image space matching, the combination of correlation and LSM provides optimum solution in terms of accuracy and DEM coverage. In our experiments, we observed similar results for 3D object space matching. The combination of correlation and LSM improved the results of individual matching scheme.

Table 5. DEM accuracy test results by number of pyramid images

	AVG(m)	MAE(m)	RMSE(m)
3D Correlation	-0.7853	2.4676	4.0088
3D Correlation + 3D LSM	-0.1608	2.2543	3.8759
3D LSM	-0.1670	2.2634	3.9023

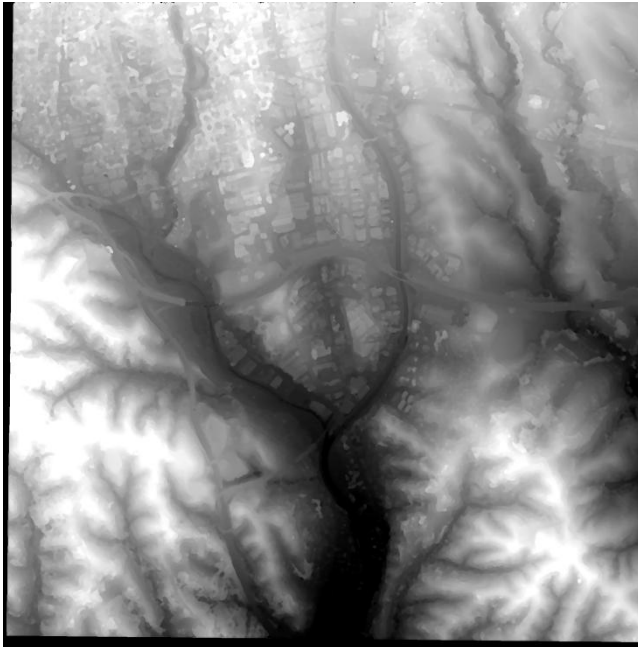


Figure 6. DEM Images of Terrassa (3D Correlation + 3D LSM)

5. CONCLUSIONS

In this paper, we proposed a new least squares matching scheme based on the 3D object space. We introduced the concept and brief mathematical derivation of 3D LSM and showed its performance. We also compared 3D LSM with correlation matching based on image space and on object space. We showed that the combination of correlation and LSM in 3D object space could produce optimum DEMs similar to the 2D image space case.

The major contribution of this paper is that we proposed and validated that LSM can be applied to object space and that the combination of 3D correlation and 3D LSM can be a good solution for automated DEM generation from HRSIs. The work in the paper is on-going. Other aspects of 3D LSM and the experiments with other test dataset are being studied. These will be reported in near future.

REFERENCES

- Kim, T., 2005. Singularity Mitigation in Automated DEM Extraction from IKONOS Images. Proc. of Asian Conference on Remote Sensing, 7-11 Nov., Hanoi, Vietnam.
- Gruen A. and Baltsavias E., 1998. Geometrically Constrained Multiphoto Matching. Photogrammetric Engineering and Remote Sensing, vol. 54, No. 4, pp. 633-641.

Okutomi M. and Kanade T., 1996. A multiple-baseline stereo. IEEE Trans. Pattern Anal. Mach. Intell. Vol. 15, No. 4, pp. 353-363.

Lee, H. Y., Kim, T., Park, W., and Lee, H. K., 2003. Extraction of Digital Elevation Models from satellite stereo images through stereo matching based on Epipolarity and Scene Geometry. Image and Vision Computing, 21(9):789-796.

Gruen, A.W., 1985. Adaptive Least Squares Correlation : A Powerful Image Matching Techniques. South African Journal of Photogrammetry, Remote Sensing and Cartography. 14(3):175-187.